



Instinct Guides You



Sutton Road, Preston, Weymouth £650,000

- Versatile Accommodation - Ground Floor Bedroom
- Garage & Driveway Parking
- Beautifully Presented Throughout
- Generous Mature Grounds
- Elevated Far Reaching Views Across Preston
- Large Living / Dining Room
- Stunning Kitchen Flows Into Sun Room
- Amenities & Bus Route Nearby
- Close To Beautiful Country Walks



Registration No. 08079158 Directors Mr Wilson, Mr Tominey

Courtesy Notice Upon using WilsonTominey as selling agents ensure we are made aware of contractual obligations you may be under. We can then proceed accordingly.

WilsonTominey Ltd
15 Westham Rd.
DT4 8NS

T 01305 775500
E sales@wilsontominey.co.uk
W www.wilsontominey.co.uk



Bordering the highly sought-after village of Sutton Poyntz and enjoying breathtaking views across Preston towards rolling hills, this beautifully presented home features four bedrooms, two reception rooms, two bathrooms and a superb open-plan kitchen/sun room. Further benefits include ample parking, a garage and stunning landscaped garden.

Approached via a generous front garden that affords both privacy and uninterrupted views, the property immediately impresses with it's large frontage. The entrance is to the side of the home, opening into a welcoming hallway with stairs to the first floor and access to the ground floor accommodation.

The front-facing lounge/diner is a wonderful space in which to relax and enjoy the outlook, with direct access onto the westerly front patio.

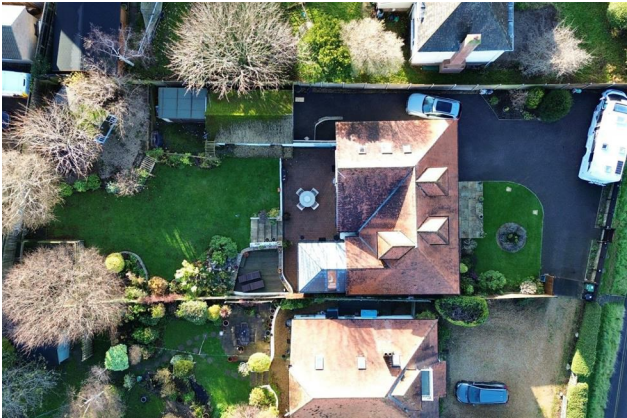
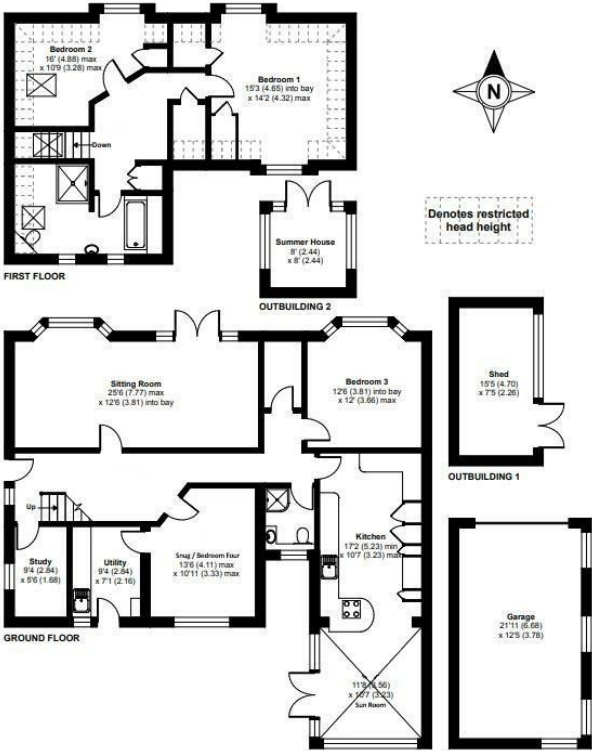
The true heart of the home is the impressive open-plan kitchen/sunroom, fitted with contemporary units, induction hob, two ovens, extractor hood & integrated dishwasher. This striking space is ideal for both everyday living and entertaining, bathed in natural light from the adjoining sunroom. Double doors open onto a large patio, seamlessly connecting indoor and outdoor living.

Also on the ground floor is a spacious double bedroom with bay window to the front, a stylish modern shower room and a large additional reception room/bedroom four offering excellent flexibility for multi-generational living or guest accommodation. A practical utility area and versatile study/office space completes the ground floor perfectly.

Upstairs are two further double bedrooms both enjoying beautiful views of the surrounding landscape and benefitting from built in wardrobes. A bathroom has been finished to a beautiful standard with walk in shower and bath, set against contemporary tiling.

The beautiful established gardens wrap around the property with an expansive lawn, mature trees and raised planters. A landscaped summer house offers a peaceful retreat.

Sutton Road, Preston, Weymouth, DT3
Approximate Area = 2134 sq ft / 198.2 sq m (includes garage)
Limited Use Area(s) = 142 sq ft / 13.1 sq m
Outbuilding = 185 sq ft / 17.1 sq m
Total = 2461 sq ft / 228.6 sq m
For identification only - Not to scale



Energy Efficiency Rating		
	Current	Potential
Very energy efficient - lower running costs		
(92 plus) A		
(81-91) B		
(69-80) C		
(55-68) D		
(39-54) E		
(21-38) F		
(1-20) G		
Not energy efficient - higher running costs		
England & Wales	EU Directive 2002/91/EC	82

Environmental Impact (CO ₂) Rating		
	Current	Potential
Very environmentally friendly - lower CO ₂ emissions		
(92 plus) A		
(81-91) B		
(69-80) C		
(55-68) D		
(39-54) E		
(21-38) F		
(1-20) G		
Not environmentally friendly - higher CO ₂ emissions		
England & Wales	EU Directive 2002/91/EC	

Important Notice: Particulars are prepared for marketing purposes only and should not be treated as a statement of the condition of any building, fixture or appliance. All measurements, floor plans and lease/ maintenance are approximate and not to be relied upon. Purchasers should make their own checks before relying on any of the information provided herein. * For double glazing and gas radiator heating, it is where specified.